



INDOFINE Chemical Company, Inc.

121 Stryker Lane, Bldg. 30, Suite 1 • Hillsborough, NJ 08844 • U.S.A.

Phone: (908) 359-6778 • FAX: (908) 359-1179

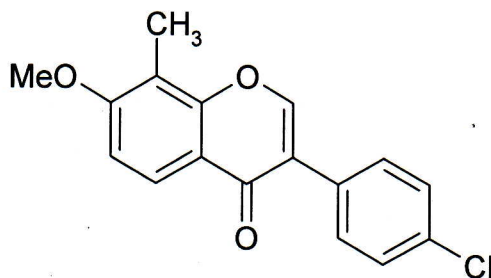
website: www.indofinechemical.com

e-mail: chemical@indofinechemical.com

CERTIFICATE OF ANALYSIS

Cat. No.: 19-811

<u>Product:</u>	4'-CHLORO-7-METHOXY-8-METHYLISOFLAVONE
<u>Lot No.:</u>	0409243
<u>Molecular Formula:</u>	C ₁₇ H ₁₃ ClO ₃
<u>Molecular Weight:</u>	300.74
<u>Melting Point:</u>	180-182°C
<u>Appearance:</u>	White shining powder
<u>Solubility:</u>	Soluble in chloroform
<u>Purity (HPLC):</u>	99.4%





INDOFINE Chemical Company, Inc.

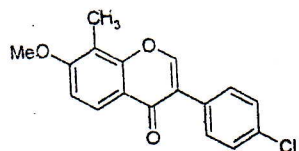
121 Stryker Lane, Bldg. 30, Suite 1 • Hillsborough, NJ 08844 • U.S.A.

Phone: (908) 359-6778 • FAX: (908) 359-1179

website: www.indofinechemical.com

e-mail: chemical@indofinechemical.com

HPLC ANALYSIS



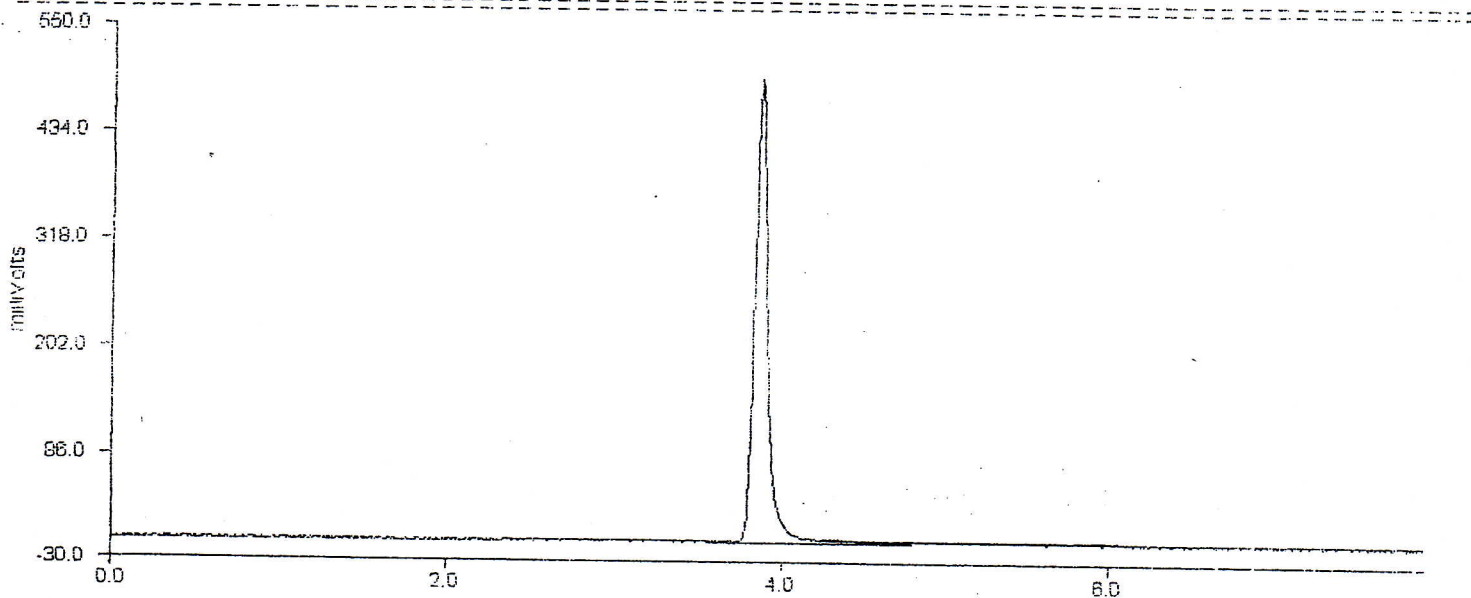
Catalog No.: 19-811

Product name: 4'-Chloro-7-methoxy-8-methylisoflavone

Lot No.: 0409243

DELTA CHROMATOGRAPHY DATA SYSTEM

STRIPCHART PLOT FOR CHROMATOGRAM - c:\deltaw\data\np08033.raw



DELTA CHROMATOGRAPHY DATA SYSTEM

LISTING PEAK TABLE FOR CHROMATOGRAM - c:\deltaw\data\np08033.raw.RAW

#	Type Name	Ret.Time	Area(uVSec)	Height(mV)	Area Percent
1	BV	3.21	6025	1.2	0.2
2	VP	3.86	2844489	503.1	99.4
3	VE	4.26	11585	1.2	0.4



INDOFINE Chemical Company, Inc.

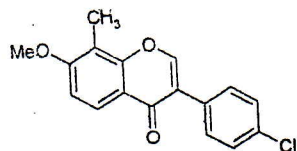
121 Stryker Lane, Bldg. 30, Suite 1 • Hillsborough, NJ 08844 • U.S.A.

Phone: (908) 359-6778 • FAX: (908) 359-1179

website: www.indofinechemical.com

e-mail: chemical@indofinechemical.com

HPLC ANALYSIS



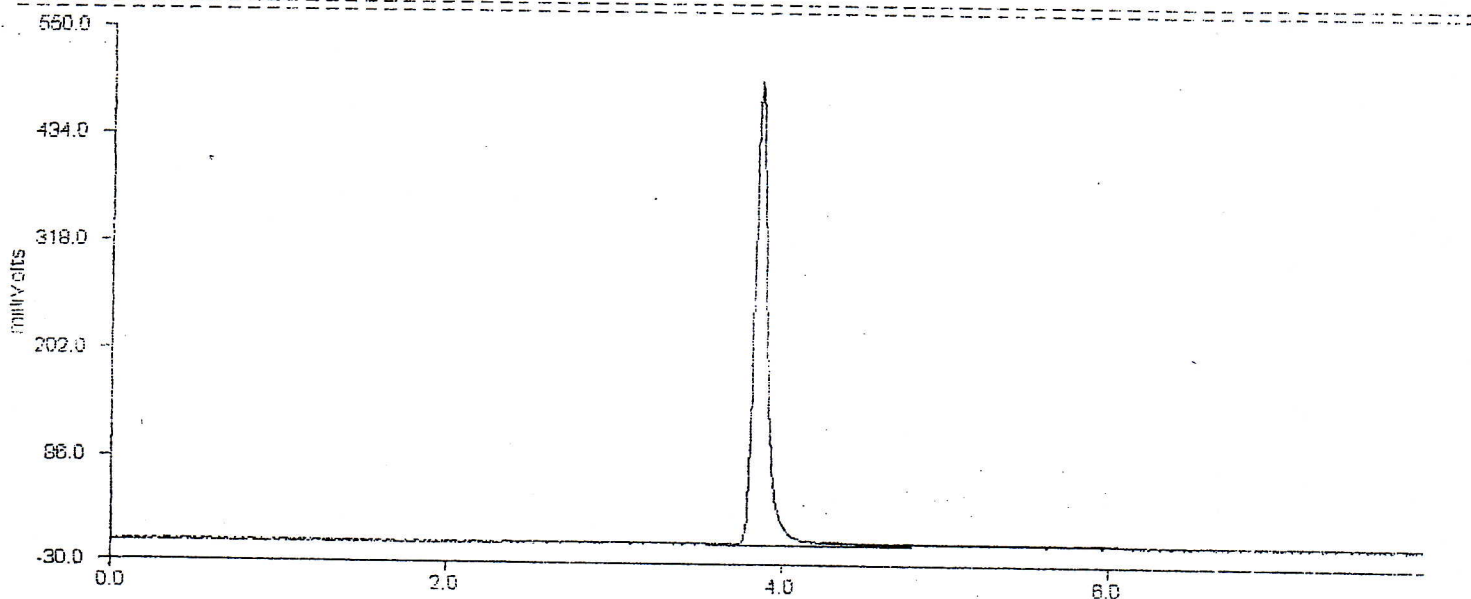
Catalog No.: 19-811

Product name: 4'-Chloro-7-methoxy-8-methylisoflavone

Lot No.: 0409243

DELTA CHROMATOGRAPHY DATA SYSTEM

STRIPCHART PLOT FOR CHROMATOGRAM - c:\deltaw\data\np08033.raw



DELTA CHROMATOGRAPHY DATA SYSTEM

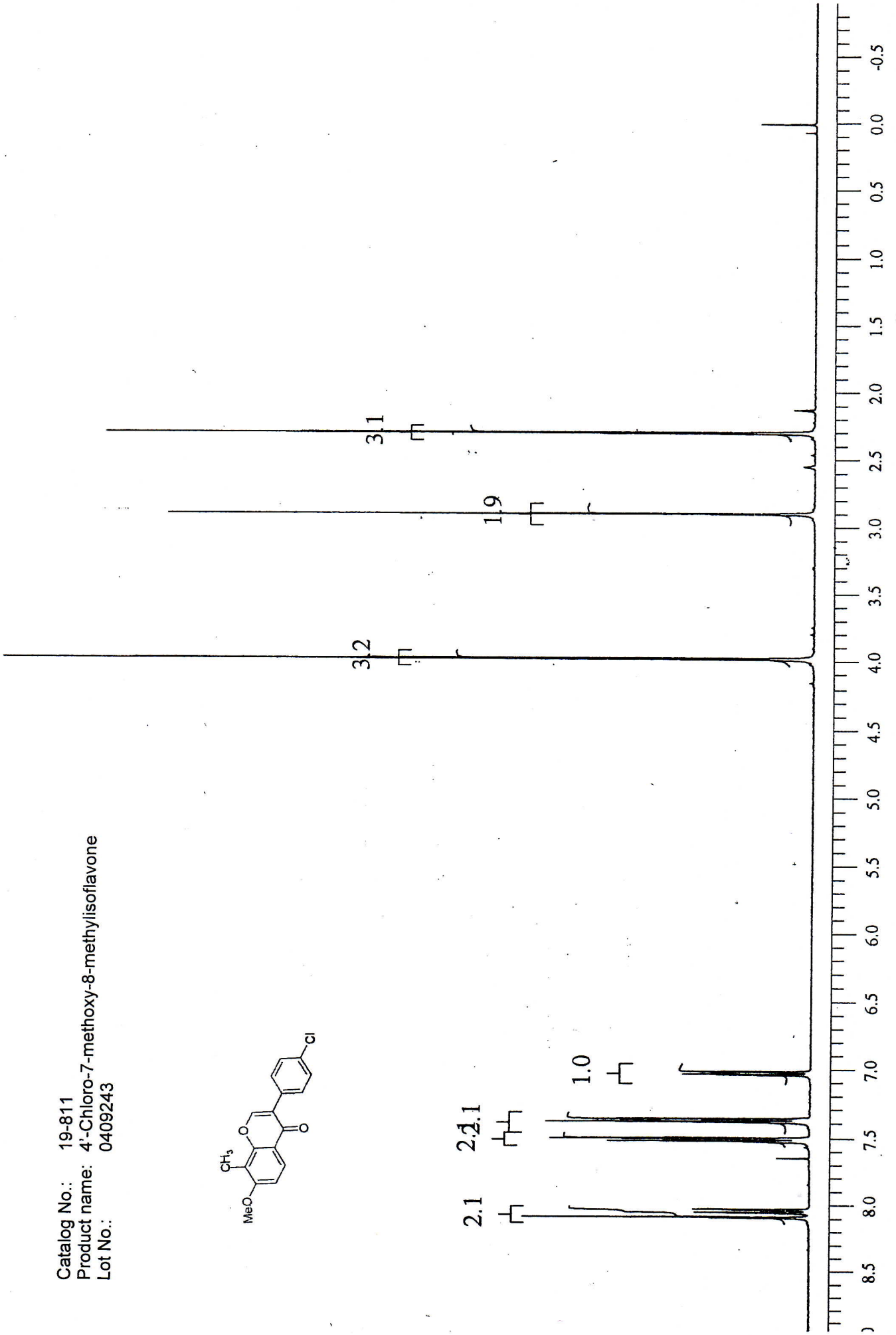
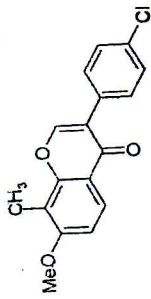
LISTING PEAK TABLE FOR CHROMATOGRAM - c:\deltaw\data\np08033.raw.RAW

#	Type Name	Ret.Time	Area(uVSec)	Height(mV)	Area Percent
1	BV	3.21	6025	1.2	0.2
2	VP	3.86	2844489	503.1	99.4
3	VE	4.26	11585	1.2	0.4



INDOFINE Chemical Company, Inc.
121 STRYKER LANE
BLDG. 30, SUITE 1
HILLSBOROUGH, NJ 08844

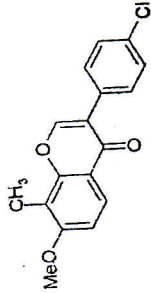
Catalog No.: 19-811
Product name: 4'-Chloro-7-methoxy-8-methylisoflavone
Lot No.: 0409243





INDOFINE Chemical Company, Inc.
121 STRYKER LANE
BLDG. 30, SUITE 1
HILLSBOROUGH, NJ 08844

Catalog No.: 19-811
Product name: 4'-Chloro-7-methoxy-8-methylisoflavone
Lot No.: 0409243



PERKIN ELMER

